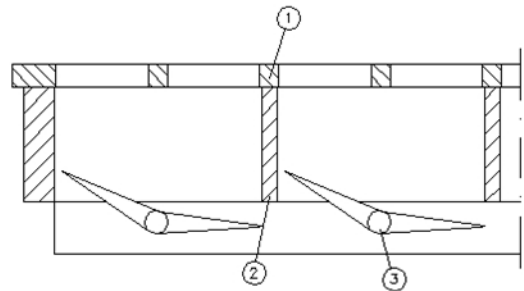
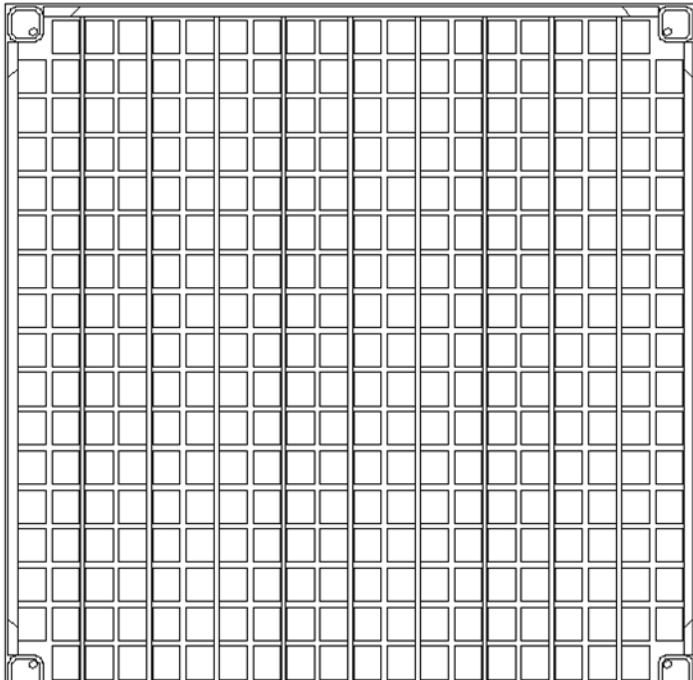


System sketch:



- 1 perforated steel sheet
- 2 load bearing tube construction
- 3 optional with lamella air flow control

Panel:

Dimensions: 600 x 600 mm
 Panel thickness: Depending on floor system
 Panel weight: ~ 15,15 kg (without covering)
 Panel material: Steel, conductive powder coated colour RAL 7036, anti-slipping R10

Air conditioning data:

Perforation: 336 rectangular holes
 Free airflow: ~ 65 % (rectangular holes 24 x 29 mm)
 Air volume: ~ 2.800 m³/h per panel at pressure drop of 10 Pa
 Lamella air flow control: possible (also subsequently)

Load values:*

Concentrated load: 3.000 N
 Tested acc. to DIN EN 12825: Class 2

Electrostatic: (DIN EN 1081; DIN 54345)

Panel with conductive powder coated R₂ or R_{EF} ~ 10⁴ Ohm

Fire protection: (DIN 4102)

Building material class: A1

* The load values are depending on the test conditions, decisive is the mock-up and the size of the pressure stamp.

Volume pressure per panel
Air conditioning panel ~ 65% with and without
lamella airflow control (LAC)

